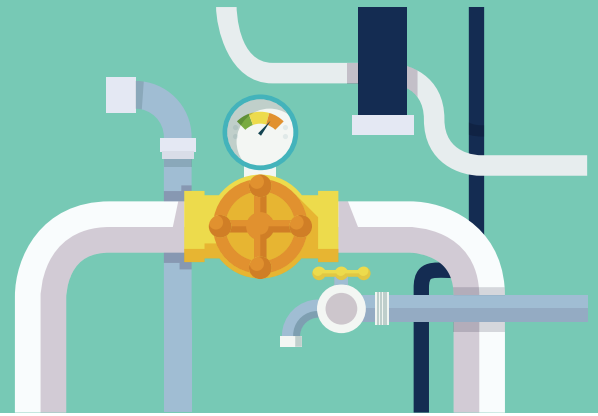


Oxygen Displacing & Toxic Gas Systems Emergency Situations and Responses



4 Emergency Situations



Should **one** of these **emergencies** occur the

**STANDARD
RESPONSE**

must be used:

- 1 - - - Do not enter the area.
- 2 - - - Confirm others have been evacuated and remain clear of the area until the situation has been resolved.
- 3 - - - Confirm that the proper notifications have been made, including local Leadership and Worldwide Safety & Health.
- 4 - - - Open doors and/or windows to the area to create a natural draft, if possible.
- 5 - - - Troubleshoot the reason for the alarm without entering the area.
- 6 - - - Conduct the necessary work from outside the area to resolve the condition.



If the gas monitor alarm is sounding, follow the Standard Response and these additional steps:

1. Verify the readings remain within the normal range before attempting to enter the area.
2. After the cause for the alarm has been addressed and the monitor readings are within the normal range, return the area to Operations.

If there is a leak or a large volume release, an alarm may not sound immediately. Follow the Standard Response and these additional steps:

1. Shut off the gas supply system from outside the area. Some systems have interlocked pneumatic valves that automatically close when alarms are triggered.
2. Do not enter the area if you encounter fog or a vapor cloud. Move upwind and confirm the area has been evacuated.
3. Determine the source of the leak and take the necessary steps to isolate and control the situation.



If you come upon a Cast Member who has collapsed, is unresponsive, or is in any way incapacitated, follow the Standard Response and these additional steps:

1. Determine if the gas supply system can be shut off from outside the area.
2. Rescue and/or medical personnel are NOT permitted to enter the area until an assessment has been made and a plan for entry has been determined.
3. After the rescue, perform the appropriate actions to make the area accessible.
4. After the area is accessible, verify the atmospheric readings remain within the normal range.
5. Return the area to Operations.



If a gas monitor alarm is malfunctioning, follow the Standard Response and these additional steps:

1. If necessary, only enter the room following the Entry Into Areas procedures.
2. After gas monitor operation has been restored, verify the readings remain within the normal range.
3. Return the area to Operations.
4. If the air/alarm condition cannot be resolved, secure the area and restrict entry.

